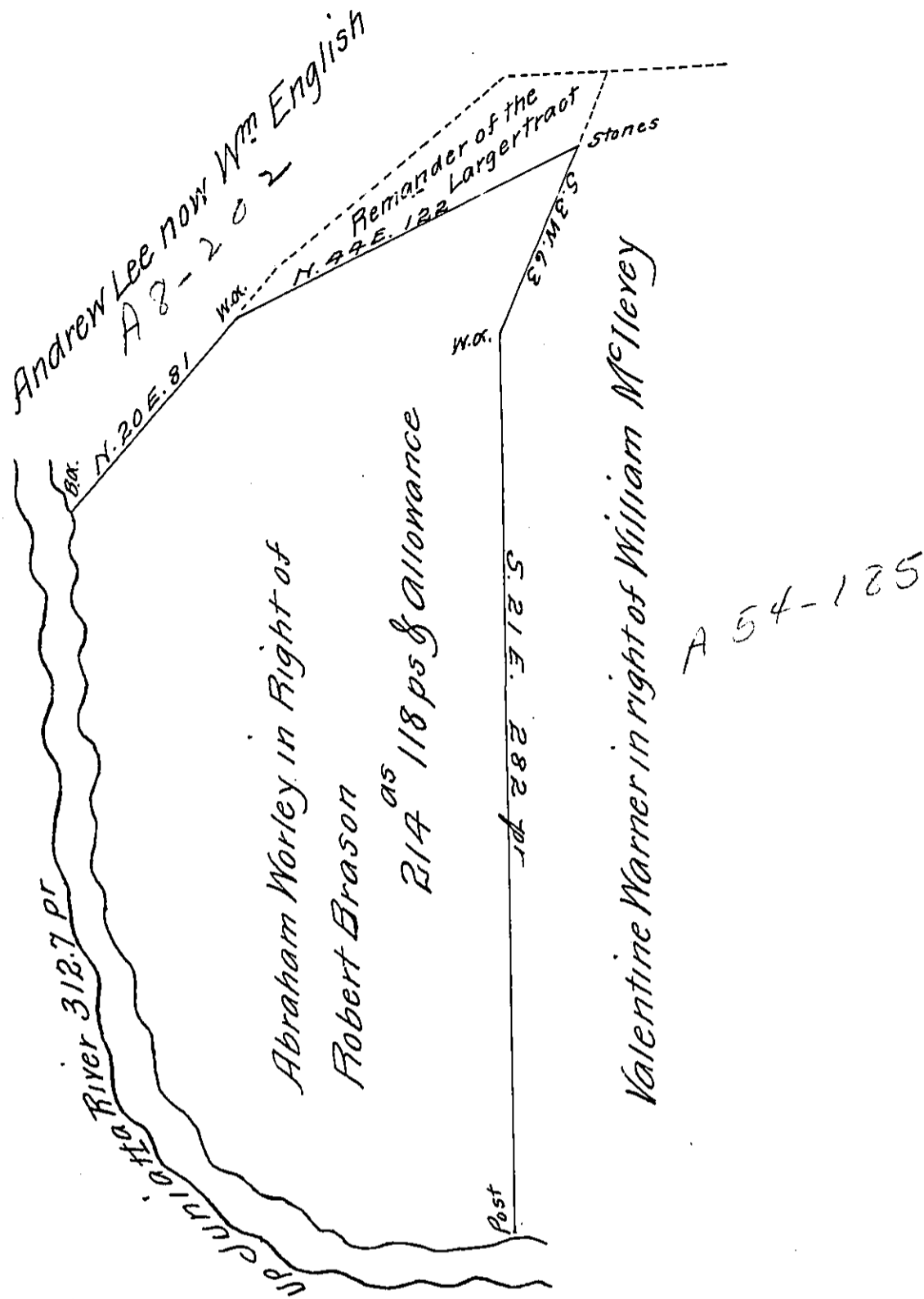


Courses & distances up Juniatta

- S. 53 W. 8
- S. 72 W. 48.7
- N. 82 W. 38
- N. 57 W. 36
- N. 39 W. 52
- N. 26 W. 130
- 312.7 pr



A Draught of a Tract of Land situate in Buffalo Township Cumberland County Containing 214^{as} 118 ps & allowance of Six pr Cent for Roads &c. It being part of a larger tract of 228^{as} & allowance, Surveyed in pursuance of a warrant granted to Robert Brason dated the 2^d Day of June 1762. Surveyed & Struck off the above from the larger tract the 10th Day of November 1813-

W^m Wheeler D.S.

To Richard T. Leech Esq^r
S.G.

IN TESTIMONY that the above is a copy of the original remaining on file in the Department of Internal Affairs of Pennsylvania, made conformably to an Act of Assembly approved the 16th day of February, 1833, I have hereunto set my Hand and caused the Seal of said Department to be affixed at Harrisburg, this Tenth day of October 1911

Nevry Howell
Secretary of Internal Affairs.